



CITY OF DARIEN

**Community Development Department
1702 Plainfield Road
Phone: (630) 353-8115
Fax: (630) 852-4709**

WINDOW REPLACEMENT

- If replacing with the same size, a permit is NOT required

- If changing the size of the framing for the opening, either larger or smaller, a permit IS required

- Please see attached information and diagram for code requirements for windows in bedrooms. Current codes require that all bedrooms have one emergency escape window

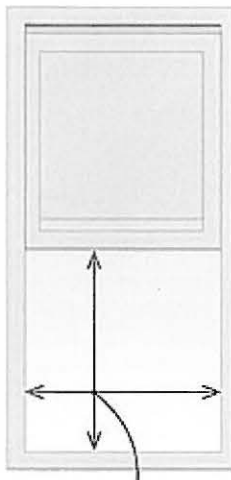
Section 310.1.1 Minimum opening area. All emergency escape and rescue openings shall have a minimum net clear opening of 5.7 square feet.

Exception: Grade floor openings shall have a minimum net clear opening of 5 square feet.

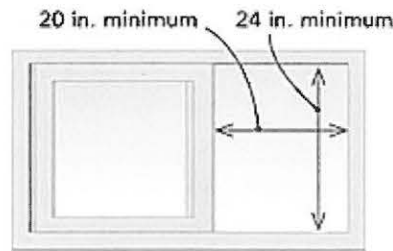
Section 310.1.2 Minimum opening height. The minimum net clear opening height shall be 24 inches.

Section 310.1.3 Minimum opening width. The minimum net clear opening width shall be 20 inches.

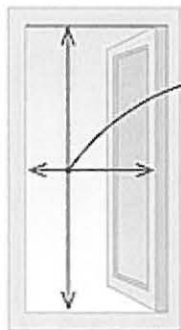
Section 310.1.4 Operational constraints. Emergency escape and rescue openings shall be operational from the inside of the room without the use of keys, tools or special knowledge.



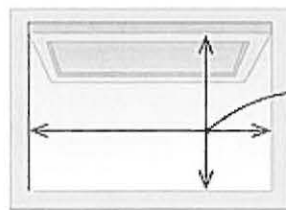
A 28-in. by 30-in. opening gives 5.8 sq. ft. of net-clear opening.



A 20-in. by 24-in. opening does not meet net-clear opening requirements.



A 20-in.-wide casement needs to be 42 in. tall.



A 24-in.-tall awning needs to be 35 in. wide.